



Artificial Intelligence (AI) in Daily Life

Vaishnavi S. Bundile¹, Sumant S. Dhole², Prof. R.R. Sherekar³

^{1,2,3}MCA II yr Sem IV P.G. Dept of Computer Applications, PRMITR Badnera City-Amravati country India

Abstract—Artificial Intelligence (AI) has seamlessly woven itself into the fabric of daily life, influencing sectors ranging from communication and entertainment to healthcare and security. This review synthesizes recent literature to examine AI's extensive impact, highlighting its role in enhancing efficiency, automating routine tasks, and personalizing user experiences across various domains. From virtual assistants that manage schedules to algorithms that curate content on social media, AI is changing our way of communication with technologies. In healthcare, AI's capabilities in medical imaging and personalized health recommendations are advancing patient care, while in security, AI-driven tools like facial recognition and fraud detection are bolstering protection efforts. Despite these benefits, the rapid adoption of AI also raises significant challenges, including concerns over data privacy, algorithmic bias, and Automation is causing jobs to disappear from industries as machines and software replace human tasks. This paper will show the importance of AI development, providing a balanced approach that maximizes AI's benefits along with addressing its inherent risks. To manage AI responsibly, experts recommend the creation of strong ethical guidelines, improved educational programs to teach responsible digital behavior, and strict government laws to ensure data security, accountability, and fairness in AI systems.

Keywords-- Artificial Intelligence, Daily Life, Communication, Information Access, Entertainment, Automation, Journalism.

I. INTRODUCTION

Artificial intelligence (AI) has grown into an essential component of current technology, altering consumer experiences through its integration into smart gadgets and personal assistants. Smart technology in this global village, such as sensors, actuators, and artificial intelligence, can improve wellness, effectiveness, environmental sustainability, and safety in homes, buildings, and environments. Artificial intelligence continues to impact every aspect of our lives. artificial intelligence is transforming our daily occupations and influencing how we perceive and communicate with our surroundings (Sepasgozar,2020). While designing an electronic object or assistance, architects must construct a general user experience (UX) that fulfills the end-user needs and aspirations. In reality, examples of inadequate Experience have ended in absence by users and were related with technological stress, tiredness, and abuse.

Customers who make use of technological products possess high expectations for what they would expect of a product or assistance, and computer performance frequently comes down to how effectively architects comprehend and convert needs into equivalent functioning and acceptable appearance (Stige,2024).

At the moment, the integration of AI in the social interaction and entertainment fields has enabled the applications of voice assistants, chatbots, game AI and so on to become smarter, so as to optimize human-machine interaction. It has streamlined communication with other players, achieving a natural feel and enriching their gaming experience, creating a more diverse and immersive world.

Nonetheless, AI is no slouch in its performance and despite its outstanding accomplishments in multiple fields and can't ignore its shortcomings. In this thesis, I will investigate under what constraints can AI be applied in these application scenarios, and how people might achieve a balance between technological advancement and privacy protection and ethical concerns. Additionally, the research aims to identify methods to guide society to adapt to the fundamental transformations caused by AI and provide a valuable reference to future AI technology development and corresponding policy-making areas. This thesis provides readers with a comprehensive perspective and in-depth analysis, which should help readers better understand the role of AI in daily life and give readers a lot of useful guidance on its further applications and development.

In addition to improving users' standard of living, intelligent home assistant technologies as well as developing automation systems allow artificial intelligence to evaluate how users behave. The framework can anticipate user demands and maximize utilization of gadgets and resources, include electrical power, with the use of physiological analysis. Fundamentally, intelligent equipment enables users to switch gadgets on and off, and researchers from a range of fields, including architecture and medical treatment, employ various kinds of actuators and sensor systems for a number of applications. But in order to utilize the precise same system, it is necessary to learn from other methods and combine them. At the same time, it is also necessary to examine the data gathered from their devices for energy management (Sepasgozar,2020). The way people engage with technology has changed as a result of artificial intelligence's (AI) smooth integration into daily life.



International Journal of Recent Development in Engineering and Technology
Website: www.ijrdet.com (ISSN 2347-6435 (Online) Volume 15, Issue 05, May 2026)

As a result of their quick development, smart gadgets and personal assistants are now essential for improving user experience by providing efficiency, convenience, and customization. These technologies are changing sectors including healthcare, education, and entertainment by using AI to comprehend customer preferences, forecast behaviors, and offer context-aware solutions. The role of AI in commonplace applications is the main topic of this study, namely how personal assistants and smart gadgets produce user friendly interfaces .

This research attempts to illuminate their disruptive potential by examining their capabilities, which range from automation and adaptive learning to natural language processing and voice recognition. It also examines the challenges posed by these technologies, including privacy concerns, ethical implications, and accessibility issues, to propose balanced approaches.

II. LITERATURE REVIEW

1. *AI in Healthcare*

Recent advancements in AI have revolutionized healthcare, offering tools for more accurate diagnostics, personalized treatment plans, and enhanced patient care. A 2023 study by [1] demonstrates the potential of AI-powered imaging systems in early cancer detection, significantly improving patient outcomes by enabling earlier intervention. Additionally, AI driven predictive analytics are increasingly used to anticipate patient deterioration, thereby preventing adverse events.

2. *AI in Finance*

The financial sector has been quick to adopt AI technologies, particularly in areas like fraud detection, trading algorithms, and customer service. A 2023 analysis by [3] highlights the role of AI is improving online transaction security; machine learning algorithms are more effective than conventional techniques at spotting fraudulent activity. Furthermore, AI-driven financial advisory services are becoming more prevalent, offering personalized investment strategies to individual users.

3. *AI in Education*

AI is also changing the education industry by automating administrative processes and delivering individualized learning experiences. According to a 2023 review by [4], AI-powered platforms such as adaptive learning systems are helping to bridge educational gaps by tailoring content to individual student needs, resulting in improved learning outcomes.

Moreover, AI-driven tools are being used to streamline grading and provide real-time feedback, thus freeing up educators to focus on teaching.

4. *AI in Social Media*

Social media platforms are leveraging AI to enhance user experience through personalized content curation and improved moderation systems. A 2023 study by [5] discusses how AI algorithms are used to analyze user behavior and preferences, resulting in more relevant content being displayed on users' feeds. However, the same study raises concerns about the ethical implications of AI-driven content moderation, particularly regarding censorship and the spread of misinformation.

5. *Ethical Considerations*

As AI permeates more aspects of daily life, moral concerns surrounding its use have gained increased attention. Privacy concerns are at the forefront, with AI systems frequently needing enormous volumes of personal data in order to work properly. A 2023 paper by [6] examines the risks associated with AI and data privacy, advocating for stronger regulations and greater transparency in AI applications. Additionally, there is ongoing debate about the potential for AI to perpetuate bias, particularly in areas such as hiring and law enforcement.

III. RESEARCH METHODOLOGY

Proposed Methodology - To conduct an in-depth analysis of the pros and cons of Artificial Intelligence (AI) in daily life, a qualitative research methodology has been adopted. This approach allows for a detailed understanding of human experiences, perceptions, and expert opinions related to the growing presence of AI in everyday activities. The research methodology consists of the following components:

1. *Research Design*

The study follows a descriptive and exploratory research design, aimed at examining both the beneficial and adverse effects of AI applications across different domains, such as healthcare, education, communication, transportation, and home automation. The objective is to identify real-life use cases and assess the impact of AI from a social, ethical, and functional perspective.

2. *Data Collection*

The data for this research is collected through secondary sources, including peer-reviewed journal articles, published research papers, books, online databases, government and industry reports, and credible news articles. Sources were chosen based on relevance, credibility, and publication date, focusing mainly on literature from the last 10 years to reflect current advancements in AI.

3. Data Analysis

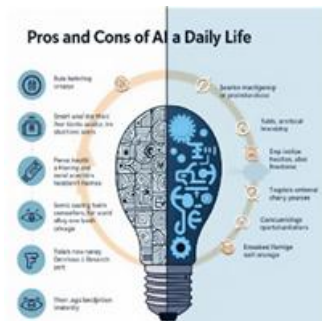
A thematic analysis approach is used to interpret the collected data. Information was categorized into themes such as "Benefits of AI in Daily Life", "Challenges and Limitations", "Ethical and Social Implications", and "Public Perception of AI". This method enables the identification of patterns and insights across multiple domains where AI is actively used.

4. Tools and Techniques

The study utilizes content analysis and literature review techniques to evaluate the sources and extract relevant information. Diagrams, comparison tables, and charts are included where necessary to support analysis and enhance clarity.

5. Scope and Limitations

This study focuses primarily on the general public's interaction with AI in everyday scenarios. It does not delve into the technical algorithms behind AI development but rather investigates its practical implications. Limitations include potential bias in secondary sources and the absence of primary data such as interviews or surveys due to time constraints. The proposed methodology is structured to provide a comprehensive, balanced view of AI's influence on daily human life, highlighting its capabilities and the precautions necessary for its responsible use.



IV. PROS OF ARTIFICIAL INTELLIGENCE IN DAILY LIFE

Artificial Intelligence has seamlessly integrated into our routines, transforming the way we interact with technology. Below are some of the key advantages AI offers in everyday life:

1. Enhanced Efficiency and Automation

One of the most significant advantages of AI is its ability to handle repetitive, time-consuming tasks with unparalleled speed and precision. In homes, devices like AI-powered robotic vacuum cleaners, automated lighting systems, and smart thermostats streamline household chores. In workplaces, automation of routine processes such as data entry, scheduling, and customer service chatbots leads to increased productivity, fewer errors, and cost reduction.

2. Personalized Recommendations and Assistance

AI has revolutionized user interaction through tailored experiences. Streaming platforms like Netflix, YouTube, and Spotify analyze user preferences using machine learning to recommend movies, videos, or music. E-commerce giants such as Amazon and Flipkart employ AI algorithms to display personalized product suggestions, increasing user satisfaction and sales. Additionally, virtual assistants like Alexa, Siri, and Google Assistant enhance daily productivity by managing calendars, setting alarms, and providing instant answers through voice commands.

3. Improvements in Healthcare

AI plays a transformative role in the healthcare industry by supporting faster, more accurate diagnoses and personalized treatments. Machine learning models analyze medical images, detect anomalies, and predict disease risks better than traditional techniques. AI-based tools like IBM Watson assist doctors in selecting the best treatment plans. Telemedicine and AI-powered chatbots increase healthcare access in remote areas, easing the load on healthcare professionals and improving patient outcomes.

4. Better Decision-Making

AI systems process vast datasets at incredible speed, uncovering patterns that would be missed by human analysis. This capability aids decision-making in sectors like finance (for fraud detection and trading), agriculture (predictive analytics for crop yield), and city planning (traffic management and waste reduction). Businesses leverage AI to understand market trends, forecast demand, and personalize customer experiences.

5. Accessibility for People with Disabilities

AI fosters inclusion by enhancing accessibility for individuals with disabilities. Tools like real-time speech-to-text converters, AI-powered sign language translation, and navigation systems assist those with hearing, visual, or mobility impairments. These innovations enable users to participate more actively in education, employment, and social activities, improving their quality of life.

V. CONS OF ARTIFICIAL INTELLIGENCE IN DAILY LIFE

While AI offers numerous advantages, it also brings certain risks and concerns that need to be addressed to ensure its responsible use.

1. Job Displacement and Unemployment

A significant drawback of AI is the displacement of human workers. Automation of repetitive jobs—such as factory assembly, data processing, and even customer service—has led to job losses in many industries. As machines become capable of performing complex cognitive tasks, there's growing anxiety about long-term unemployment and the widening gap between skilled and unskilled labor.

2. Privacy and Surveillance Concerns

AI relies heavily on data, which often includes personal and sensitive information. Advanced surveillance systems powered by facial recognition and behavioral analysis can infringe upon individual privacy. While useful for crime prevention, such technologies can also be misused by governments or corporations for unauthorized monitoring or manipulation of user behavior.

3. Dependence on AI and Loss of Human Skills

As AI systems take over more everyday tasks, people risk losing essential skills such as memory, problem-solving, and navigation. Dependence on AI-driven tools—like GPS for directions or chatbots for communication—can diminish critical thinking and human creativity, making people overly reliant on machines for decision-making.

4. Ethical and Bias Issues

AI systems often reflect the biases found in the data used to train them. This has led to controversial outcomes in areas such as hiring, loan approvals, and law enforcement. For example, biased AI recruitment tools may disadvantage certain ethnic or gender groups. Moreover, the "black box" nature of AI models makes it difficult to understand or question decisions, creating ethical and legal challenges.

5. High Implementation Costs

Implementing AI solutions involves significant investment in software, hardware, and skilled professionals. Small businesses and developing regions may struggle to afford these costs, contributing to a digital divide where only well-resourced entities benefit from AI, leaving others behind.

6. Security Vulnerabilities

AI systems are vulnerable to hacking, data poisoning, and adversarial attacks. Malicious actors can exploit AI systems to generate fake content, manipulate images or videos, or make incorrect predictions. In critical areas like autonomous vehicles or healthcare, such vulnerabilities can lead to dangerous outcomes.

VI. BALANCED IMPACT OF AI IN SPECIFIC DOMAINS

AI's impact varies across domains and includes both positive contributions and potential risks. A balanced view helps in understanding where to draw ethical lines and how to implement AI responsibly.

1. Education

Pros:

AI enhances learning experiences through personalized learning platforms, automated grading, and virtual tutors. Students receive content tailored to their learning pace, leading to better comprehension and outcomes.

Cons:

Excessive use of AI may reduce face-to-face interaction and emotional support.

AI tools cannot fully replace the human intuition and empathy required in teaching, especially in special education.

2. Communication

Pros:

AI improves communication through tools like real-time translation, sentiment analysis, and voice-to-text applications. It enables people from different linguistic backgrounds to connect seamlessly.

Cons:

AI-driven misinformation, deepfakes, and spam bots spread false information rapidly, distorting public perception and affecting trust in digital platforms.

3. Transportation

Pros:

Prediction systems, and smart parking solutions. These advancements reduce traffic congestion, improve road safety, and offer convenience.

Cons:

Autonomous vehicles still face reliability issues, and questions remain about liability in case of accidents. AI-driven transport systems can malfunction due to hardware failures or software bugs, posing safety risks.



VII. ANALYSIS AND DISCUSSION

Artificial Intelligence (AI) has become a crucial part of modern society, touching nearly every aspect of daily life. The analysis presented here explores both the advantages and disadvantages of AI based on current literature, real-life applications, and expert perspectives.



International Journal of Recent Development in Engineering and Technology
Website: www.ijrdet.com (ISSN 2347-6435 (Online) Volume 15, Issue 05, May 2026)

- In the healthcare sector, future AI systems may offer real-time diagnosis, predictive health alerts, and fully automated robotic surgeries, leading to faster treatment and better outcomes. In education, AI could support emotionally adaptive learning environments, where teaching methods dynamically adjust to a student's emotional and intellectual state.
- Advancements in Natural Language Processing (NLP) and Computer Vision will further refine communication tools, enabling AI systems to interact with users in more natural, human-like ways. In transportation, fully autonomous vehicles may become mainstream, revolutionizing travel and reducing accidents caused by human error.
- However, with these advancements, there is also a need for continued research in ethical AI, including the development of unbiased algorithms, transparent decision-making models, and stronger data privacy measures.
- Future developments must also focus on reducing the digital divide by making AI technologies accessible and affordable to all segments of society.
- In conclusion, the future scope of AI in daily life is vast and promising, with the potential to enhance human capabilities, increase productivity, and solve complex global problems provided it is developed and deployed responsibly.
- However, it is equally crucial to acknowledge the pressing concerns surrounding AI, including job displacement, ethical dilemmas, loss of human skills, privacy violations, and security risks.
- These drawbacks remind us that while AI can be a powerful enabler, its implementation must be approached with responsibility, transparency, and inclusivity. A balanced perspective is essential one that promotes innovation without compromising ethical values or human dignity.
- Governments, developers, industries, and users must collaborate to establish strong policies, ethical frameworks, and robust systems to ensure AI benefits are distributed fairly and its risks are mitigated. As we move further into an AI-driven era, continued research, critical evaluation, and ethical practices will be key to harnessing AI's full potential for the betterment of society.

REFERENCES

IX. CONCLUSION

- Artificial Intelligence has undoubtedly become a central component of modern living, offering transformative benefits while simultaneously posing significant challenges. This research has explored how AI enhances efficiency, personalization, decision-making, healthcare services, and accessibility, demonstrating its vast potential to improve daily life.
- From smart home systems to personalized recommendations and AI assisted medical diagnostics, the technology continues to reshape how individuals interact with their environment and perform daily tasks.

- [1] Russell, S., & Norvig, P. (2021). *Artificial Intelligence: A Modern Approach* (4th ed.). Pearson Education.
- [2] Marr, B. (2020). *Artificial Intelligence in Practice: How 50 Successful Companies Used AI and Machine Learning to Solve Problems*. Wiley.
- [3] Chui, M., Manyika, J., & Miremadi, M. (2016). *Where Machines Could Replace*.
- [4] *Humans—and Where They Can't (Yet)*. McKinsey Global Institute. Retrieved from <https://www.mckinsey.com>
- [5] Vincent, J. (2021). *AI Bias and How to Fix It: The Growing Debate Over Fairness in Machine Learning*. The Verge. Retrieved from <https://www.theverge.com>
- [6] IBM. (n.d.). *What is Artificial Intelligence (AI)*. IBM Cloud Learn Hub. Retrieved from <https://www.ibm.com/cloud/learn/what-is-artificial-intelligence>
- [7] World Economic Forum. (2023). *The Future of Jobs Report*. Retrieved from <https://www.weforum.org/reports>
- [8] Topol, E. (2019). *Deep Medicine: How Artificial Intelligence Can Make Healthcare Human Again*.
- [9] Basic Books.
- [10] Future of Life Institute. (2021). *Benefits & Risks of Artificial Intelligence*. Retrieved from <https://futureoflife.org/background/benefits-risks-of-artificial-intelligence>
- [11] Dwivedi, Y. K., et al. (2021). *Artificial Intelligence (AI): Multidisciplinary Perspectives on Emerging Challenges, Opportunities, and Agenda for Research, Practice and Policy*. *International Journal of Information Management*, 57, 101994.
- [12] Sharma, R. (2022). *AI in Daily Life: A Comprehensive Study of Emerging Trends and Issues*.