



International Journal of Recent Development in Engineering and Technology  
Website: www.ijrdet.com (ISSN 2347-6435 (Online) Volume 15, Issue 04, April 2026)

## Ethical Implications of AI Companions on Human Social Behavior

Tanushri A. Pund<sup>1</sup>, Pratiksha G. Hole<sup>2</sup>, Prof. A. J. Pimprikar<sup>3</sup>

<sup>1,2</sup>MCA II yr Sem, <sup>3</sup>Assistant Prof, P.G. Dept of Computer Applications, PRMITR Badnera, City –Amravati country India

**Abstract--** The rapid advancement of artificial intelligence has led to the emergence of AI companions designed to provide emotional support, social interaction, and personalized engagement. These systems are increasingly used in contexts such as mental health assistance, elder care, and everyday companionship, offering potential benefits like reduced loneliness, improved emotional well-being, and greater accessibility to social support. However, the growing presence of AI companions raises ethical questions about the nature of human–AI relationships and their influence on traditional forms of social interaction.

This research examines the ethical implications of AI companions on human social behavior, with particular emphasis on emotional dependency, authenticity of relationships, privacy, and individual autonomy. Prolonged engagement with AI companions may alter human empathy, communication skills, and expectations from real-world relationships, potentially leading to social isolation or weakened interpersonal bonds. Additionally, concerns arise regarding data collection, surveillance, and the manipulation of user emotions through algorithmic design.

The study also addresses the responsibilities of AI developers, organizations, and policymakers in ensuring ethical design and deployment of AI companions. It emphasizes the need for transparency, informed consent, and safeguards to prevent over-reliance and misuse. By critically analyzing both the benefits and risks associated with AI companionship, this research aims to contribute to ethical discourse and propose guidelines for the responsible integration of AI companions into human social life.

**Keywords--**Artificial Intelligence, AI Companions, Human Social Behavior, Ethical Implications, Emotional Dependency, Human–AI Interaction, Privacy, Social Relationships

### I. INTRODUCTION

The rapid advancement of artificial intelligence (AI) technologies has significantly transformed the way humans interact with digital systems, leading to the emergence of AI companions capable of engaging in meaningful social and emotional interactions. These AI-driven entities, ranging from chatbots and virtual assistants to humanoid robots, are increasingly integrated into daily life for purposes such as companionship, mental health support, education, and elder care. By simulating human-like conversation and emotional responsiveness, AI companions offer new forms of social connection, particularly for individuals experiencing loneliness or social isolation..

Despite their potential benefits, the growing reliance on AI companions raises important ethical concerns regarding their impact on human social behavior. Prolonged interactions with AI systems may influence emotional development, interpersonal communication skills, and expectations from human relationships. Issues such as emotional dependency, authenticity of relationships, privacy of personal data, and user autonomy have become central to ethical debates surrounding human–AI interaction. Furthermore, the ability of AI companions to collect, analyze, and respond to sensitive personal information intensifies concerns about surveillance, manipulation, and informed consent.

This research seeks to explore the ethical implications of AI companions and their influence on human social behavior.

### II. LITERATURE SURVEY

The development of Artificial Intelligence (AI) companions has gained significant attention in recent years. These systems include conversational agents, virtual assistants, and social robots that interact with humans in natural and emotionally responsive ways. Several researchers have studied the social and ethical implications of such technologies.

Turkle [1] studied the psychological impact of human interaction with intelligent machines. The study found that individuals may form emotional connections with AI companions, which can sometimes replace real human relationships. The research highlighted concerns that excessive reliance on AI companions may reduce direct human communication and affect social behavior. Bickmore and Picard [2] introduced the concept of relational agents that are capable of maintaining long-term relationships with users. Their work demonstrated that AI systems can simulate empathy and emotional support, which encourages users to trust and interact with them regularly. However, the study also pointed out ethical concerns related to emotional manipulation and authenticity of machine-generated empathy.

Floridi et al. [3] discussed ethical principles for artificial intelligence systems, including transparency, accountability, and fairness. The authors emphasized that AI technologies should be designed responsibly to ensure that users understand how the system works and how their personal data is used.

Darling [4] examined human emotional responses toward social robots and AI companions. The study showed that many individuals treat robots as social entities and may develop emotional attachments to them. This raises ethical questions about whether AI systems should be designed to intentionally trigger emotional responses from users. Calo [5] explored the legal and ethical challenges associated with AI technologies. The study highlighted privacy risks and data protection concerns because AI companions often collect personal and behavioral data from users during conversations and interactions.

### III. METHODOLOGY

This research uses a qualitative research approach to analyze the ethical implications of AI companions on human social behavior. The study is mainly based on secondary data collected from research papers, journals, and academic articles related to artificial intelligence and human–AI interaction. First, relevant literature on AI companions and their social impact was collected from various scholarly sources. These studies helped in understanding how AI systems interact with humans and influence their emotional and social behavior.

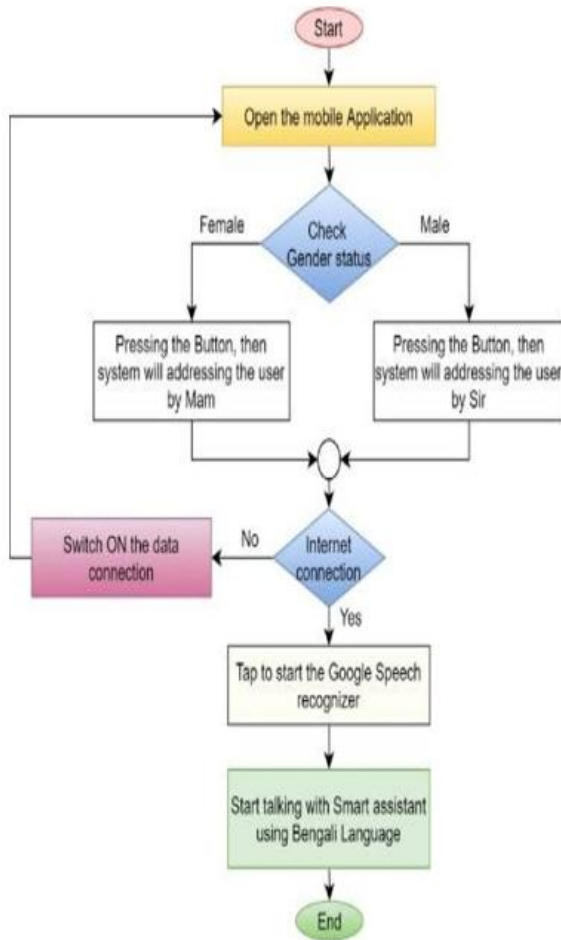
Next, the collected information was analyzed to identify key ethical concerns such as privacy issues, emotional dependency, manipulation, and reduced human-to-human interaction. Different research findings were compared to understand both the positive and negative effects of AI companions. Finally, based on the analysis, the study highlights major ethical challenges and suggests the importance of responsible AI development and ethical guidelines to ensure that AI companions support human wellbeing without harming social relationships.



### IV. RESULTS AND DISCUSSION

AI companions such as chatbots, virtual assistants, and social robots are increasingly used in daily life to assist users and provide emotional interaction. The analysis of previous studies indicates that these systems can simulate human-like communication and provide support to users.

Diagram : Human–AI Interaction Model



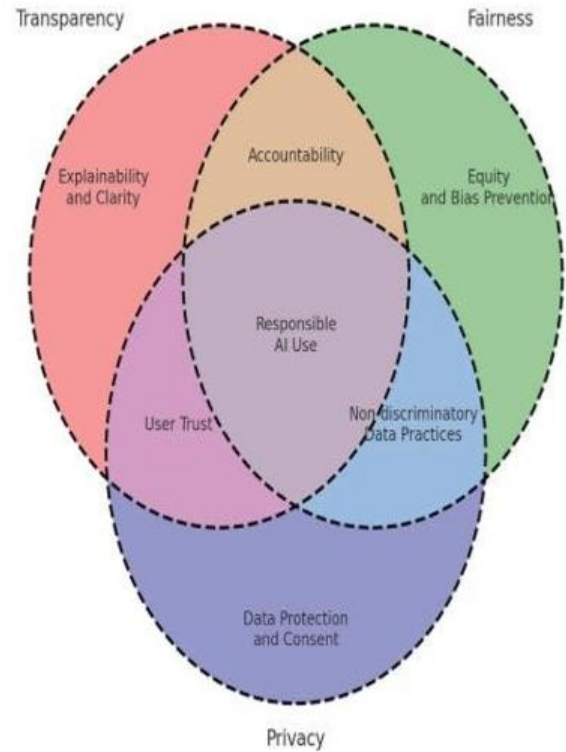
**Figure : Human–AI Interaction Model**

The above figure shows how users interact with AI companions such as chatbots and virtual assistants. The system processes user input, analyzes it using artificial intelligence algorithms, and generates responses that simulate human conversation. This interaction creates a continuous communication cycle between humans and AI systems.

### Ethical Issues

Despite these advantages, the use of AI companions raises several ethical concerns. One major issue is emotional dependency, where users may rely heavily on AI systems for companionship. Another concern is privacy and data security because AI companions collect large amounts of personal data during interactions. If not properly protected, this data may be misused or accessed by unauthorized parties.

Ethical Considerations in AI Development: Venn Diagram



The diagram illustrates the major ethical challenges associated with AI companions. Continuous interaction with AI systems can lead to emotional attachment, privacy risks, and reduced human communication. These issues highlight the importance of developing ethical guidelines for AI technologies.

Overall, the results indicate that AI companions provide both benefits and challenges. While they offer emotional support and convenience, they also raise ethical concerns that must be addressed. Responsible AI design, transparency, and proper data protection measures are necessary to ensure that AI companions positively influence human social behavior.

### V. CONCLUSION

Artificial Intelligence companions are rapidly becoming an important part of modern digital life. These systems, including chatbots, virtual assistants, and social robots, are designed to interact with humans and provide assistance, emotional support, and companionship. The study examined the ethical implications of AI companions and their influence on human social behavior.



The results of the research indicate that AI companions can offer several benefits, such as reducing loneliness, providing continuous support, and assisting users in daily activities. They can be particularly helpful for elderly individuals, people living alone, or users who require emotional interaction and guidance. However, the study also highlights several ethical challenges associated with the use of AI companions. Issues such as emotional dependency, privacy concerns, data security risks, and reduced human-to-human interaction were identified as significant concerns. Continuous reliance on AI systems for companionship may affect real social relationships and influence how individuals communicate with others. Therefore, it is important for researchers, developers, and policymakers to focus on the responsible development of AI technologies. Ethical guidelines, transparency in AI systems, and strong data protection measures should be implemented to ensure that AI companions support human well-being without negatively affecting social relationships. In conclusion, AI companions have the potential to positively contribute to society if they are developed and used responsibly. Future research should focus on creating ethical frameworks and improving AI design so that these technologies enhance human interaction rather than replace it.

#### REFERENCES

- [1] L. Floridi, J. Cowls, M. Beltrametti, R. Chatila, P. Chazerand, V. Dignum, C. Luetge, and R. Madelin, "AI4People—An Ethical Framework for a Good AI Society: Opportunities, Risks, Principles, and Recommendations," in *Minds and Machines*, vol. 28, no. 4, 2018, pp. 689–707. DOI: 10.1007/s11023-018-9482-5.
- [2] T. Bickmore and R. Picard, "Establishing and Maintaining Long-Term Human–Computer Relationships," in *ACM Transactions on Computer-Human Interaction*, vol. 12, no. 2, 2005, pp. 293–327. DOI: 10.1145/1067860.1067867.
- [3] K. Darling, "Extending Legal Rights to Social Robots," in *Proceedings of the IEEE International Symposium on Robot and Human Interactive Communication*, 2016, pp. 1–6. DOI: 10.1109/ROMAN.2016.7745163.
- [4] R. Calo, "Robotics and the Lessons of Cyberlaw," in *California Law Review*, vol. 103, no. 3, 2015, pp. 513–563. DOI: 10.15779/Z38BG31.
- [5] S. Turkle, "Authenticity in the Age of Digital Companions," in *Proceedings of the International Conference on Human–Computer Interaction*, 2017, pp. 21–30. DOI: 10.1007/978-3-319-58071-5\_2.
- [6] A. Sharkey and N. Sharkey, "Granny and the Robots: Ethical Issues in Robot Care for the Elderly," in *Ethics and Information Technology*, vol. 14, no. 1, 2012, pp. 27–40. DOI: 10.1007/s10676-010-9234-6.
- [7] D. Levy, "Intimate Relationships with Artificial Partners," in *Proceedings of the IEEE International Symposium on Robot and Human Interactive Communication*, 2015, pp. 102–107. DOI: 10.1109/ROMAN.2015.7333563.
- [8] B. Reeves and C. Nass, "The Media Equation: How People Treat Computers, Television, and New Media Like Real People and Places," in *Proceedings of the Conference on Human Factors in Computing Systems (CHI)*, 1996, pp. 321–328. DOI: 10.1145/238386.238493.