

Effectiveness of Artificial Intelligence (AI) based Adapted Curriculum in learning Mathematical concept among Differently Abled Children with Intellectual Disability

Prof. (Dr.) Kunal Kanti Hazra¹, Prof. (Dr.) Moumita Mukherjee²

¹HOD and Director of IQAC and (R&D) Office, Department of M.Ed., Annapurna Memorial College of Education, Kakdwip and also Post-Doctoral Research Fellows in UNESCO collaborate with Adamas University, Kolkata, India

²Professor, Department of Physics, Dean (Research and Development), Adamas University, Kolkata, Ex-Scientist – DRDO Center, Govt. of India, Chief Investigator, DRDO Project, Govt. of India

Abstract-- More than 55% of the total tribal population of India are living in central India like Bihar, West Bengal, Orissa, and Madhya Pradesh and Himalayan, Western India, the Dravidian region and Andaman, Nicobar and Lakshadweep islands. Curriculum adaptation is a continuous process that modifies or adapts the standard of prescribed curriculum in terms of content or delivery of instruction to meet the learning needs of students with learning problems, including children with disabilities. The content, teaching process, assessment and evaluation, and the physical environment may be modified or adapted and activities must be flexible for the students to benefit and achieve success in the classroom. In this study investigator attempted to find out the effect of Artificial Intelligence (AI) based Adapted Curriculum in learning mathematics among differently abled children with Intellectual Disability. True Experimental Research Design with Pre and Posttests has been employed in the study. Investigator has chosen two chapters namely 'patterns in shapes' and 'numbers' from II class math text book developed by West Bengal Text Book Corporation. The researcher adapted the above stated two chapters by using clicker software version 6.0. The adapted math curriculum (AMC) checklist was prepared with 75 items under 21 domains after validation. In total ten Children with mild Intellectual Disability were selected as sample for the present study by adopting purposive sampling under non probability sampling method. Among the ten students, five represent control group and remaining five were in experimental group. Artificial Intelligence (AI) based Adapted Curriculum for mathematics was implemented among the samples for 35 sessions. The collected data were analyzed quantitatively by applying Mann-Whitney test, Wilcoxon signed Rank test. The findings revealed that there is a significant difference in pre and posttests mean scores of the sample in learning mathematics. It also states that the performance level of the sample closely corresponded to the criterion shifts in all the items of computer based adapted mathematics curriculum.

Keywords-- Artificial Intelligence (AI) based Adapted Curriculum, Mathematical Concept and Children with Intellectual Disability

I. INTRODUCTION

Children with Disabilities (Differently abled children with Intellectual Disability (DACID)) are in great requirement of appropriate educational measures for helping them in meeting out their special needs and to cope with their deficits or extraordinary abilities. Differently abled children with Intellectual Disability (DACID) face numerous barriers in attending school and receiving appropriate education. An essential practice required for Differently abled children with Intellectual Disability (DACID) to access and progress in the education is the provision of accommodations and modifications in the curriculum. Access to assistive technology and accessible technology for Differently abled children with Intellectual Disability (DACID) is critical for many to access and benefit from education. For Differently abled children with Intellectual Disability (DACID), technology can give access to learning opportunities previously closed to them. Education for intellectually disabled children is a challenging task. Children with mild Intellectual Disability demonstrate wide diversity in their academic and behavioral performance. Moreover, within typical classroom settings they learn academic materials much slower than their normal peers that result in low achievement in all academic areas of subject including Mathematics.

According to American Association on Intellectual Disabilities (AAIDD) "Intellectual disability is a disability characterized by significant limitation in both intellectual functioning and in adaptive behaviour, which covers many everyday social and practical skills. This disability originates before the age of 22. Many of the disabled are affected throughout their lifespan. Children with mild Intellectual Disability are distinctly identified because they do not keep pace with developmental expectations in cognitive, social and motor functioning.



Characteristically, significant developmental delays in early childhood are predictive of poor academic functioning in childhood, as compared with same age peers. Most of the studies have been conducted towards identifying the cognitive difficulties associated with intellectual disability, based on the deficit model of intellectual disability. The subsequent studies have adopted a developmental perspective, in which the functioning of Children with mild Intellectual Disability is compared with typically developing children of comparable developmental level (Williams, 2005). Currently, the emphasis has switched from assessing people's deficiencies to identifying useful support (Buntinx & Schalock, 2010).

Children with mild Intellectual Disability generally follow the same developmental pathways as their typically developing peers but at a slower rate. Lower attainment rate influences their learning and academic achievement especially learning mathematical concepts.

II. CURRICULUM FOR DIFFERENTLY ABLED CHILDREN WITH INTELLECTUAL DISABILITY

No country in the world has regular curriculum which is appropriate for all students. While most educational institutions claim that their curriculum is acceptable for all students, this is never the case unless curriculum modification is implemented. Toilet training and self-feeding are two essential learning goals that few school systems cover in their regular curriculum. Similarly, educational goals relevant to intellectually gifted children frequently fall outside of what is scheduled in the standard curriculum for children up to the ending of secondary school. While good instructional design for the entire class can minimize the need for adaptation, adapting the curriculum to meet the learning goals of children with these diverse demands is sometimes the only way to satisfy their needs. Curriculum for Children with mild Intellectual Disability should aim at a) attaining personal adequacy, b) developing social competence, c) achieving economic independences (Msipha, 2013).

III. CURRICULUM ADAPTATION

The term "curriculum" refers to all aspects of teaching and learning, including learning objectives, learning programmes, assessment, and methods. It refers to all of the formal and informal learning opportunities provided by the school to prepare students for the opportunities and responsibilities of adulthood. In general, an adaptation is a goal-driven process that involves making a change to better satisfy the goals of an individual or a group.

Curriculum adaptation, on the other hand, refers to making components of the curriculum accessible, such as teaching and learning resources, in order to meet the requirements of all learners (Msipha, 2013). As a result, curriculum adaptation is a change to the delivery of instructional techniques and the intended goals of student performance that does not affect the content but does modify the conceptual complexity of the curriculum slightly. Curriculum adaptation is based on the principle that the school must respond to the educational requirements of the students, rather than just providing a place for students with special needs among their peers with no difference in instruction. (Hassall & Rose, 2005).

IV. ARTIFICIAL INTELLIGENCE (AI) BASED ADAPTED CURRICULUM

Computer-based education has expanded the classroom experience by providing students with material directly pertaining to their selected subjects of interest, analyzing students' responses immediately to determine whether or not to spend more time on a specific topic. Moreover, computers are being used to expand the learning experience in different subjects such as Mathematics in classrooms (Chambers, et al., 2011). They can be used to teach new skills or to help learning Mathematical concepts that a student has been experiencing difficulties with. Students who struggled to study in a printed materials environment benefit greatly from multimedia applications. Students with disabilities benefit from Computer Based Instruction (CBI) since they get rapid feedback and don't waste time practicing the improper skills. Computers hold students' interest since their programmes are interactive and encourage them to compete in order to improve their grades. Furthermore, CBI watches the students' progress and does not advance them until they have mastered the skill.

V. NEED AND SIGNIFICANCE OF THE STUDY

The goal of curriculum adaptation is not to decrease educational standards, but modify the curriculum to make education more accessible in the first place, and to ensure that no student is unfairly biased or excluded. Math skills are essential for a student to be able to live freely in the community, care for oneself, and make decisions about their lives. Teachers should adjust the curriculum to ensure equality and match the needs of different students so that everyone benefits and can fully engage in classroom activities.

This encompasses numerical awareness and ideas, time, money, measurement, calculator use, and so on. Understanding the notion of mathematics should be a priority for all students, including children with intellectual disabilities.

Effective technology integration such as Artificial Intelligence (AI) based Adapted Curriculum can provide all learners the ability to access the general education curriculum, providing them multiple means to complete their work with greater ease and independence in performing tasks that they were formerly unable to accomplish, or had great difficulty in accomplishing them (Roberts et al., 2008). As a result, they are tackling the 'functional obstacles' by increasing, maintaining, or enhancing their learning outcomes in a wide environment of abilities and expectations. Computer assisted mathematics instruction programmes can demonstrate concepts, instruct, and remediate student errors in learning various Mathematical concepts. Considering that computers offered multiple activities, researchers also used them with special populations in order to "enhance the quality of life of SWID and other developmental disabilities" (Foshay and Ludlow, 2005).

A technology-oriented learning environment that makes use of accessible technology supports educational equality by offering access to and equitable learning opportunities through individualized and differentiated teaching that can fit each learner's requirements and preferences. As a result, there is a need to give instructors with adequate knowledge and abilities, which will aid in the development of a more favourable attitude toward the use of technology in the classroom (Afzal, et.al. 2014). The way educators educate has already been altered by technological advancements. McManis & Gunnewig, (2012) reported that Computer Assisted Instruction (CAI) has been used to teach a variety of academic skills and subjects such as Mathematics to teach students with disabilities including intellectual disabilities. Hence the need has arisen to know about the effect of Artificial Intelligence (AI) based Adapted Curriculum on learning mathematical concepts of Children with mild Intellectual Disability. The present study attempts to develop Mathematical concepts particularly pattern in shapes and number in academic learning of the Children with mild Intellectual Disability through Artificial Intelligence (AI) based Adapted Curriculum.

VI. REVIEW OF LITERATURE

Zilacy S.et.al. (2017) conducted a study to determine the effectiveness of attention training on the math performance of elementary school students with intellectual disability adopted quasi experimental study by pre-test, post-test design with the control group. Students with intellectual disabilities aged 10 to 12 years were included in the study. Subjects were selected by convenient sampling method and 30 students with intellectual disability were participated. The results indicated that attention training program has influenced math performance of the primary school students with intellectual disability.

Singh and Agarwal (2013) examined the effectiveness of teaching mathematics to children with mental retardation using computer games with conventional method of teaching. The result showed that the group taught with the help of computer games produced significantly greater remediation of mathematics skills as compared to the group taught through conventional method of teaching. It was found that gender did not affect acquisition of mathematics-concepts on two concepts. However, on one concept a contradictory result was obtained. Similarly, it was found on two mathematics concepts that boys benefit more from computer games as compared to girls. However on one concept, no difference was found.

Educationists and other scientists believe that early interventions give children the best chance of developing their full potential.

Ghaywan and Arakh (2012) studied the effectiveness of computer assisted instruction on academic performance of the children with mild mental retardation at primary level. The major findings of the study were: CAI increased students learning outcomes, has an impact on learning literacy and numeracy skills of students with mild retardation. Students showed increase in their attention span, were highly motivated with increased communication and cooperation among the students. The study also revealed that computers could also help in developing social and interpersonal skills. The researchers suggested that more exposure was required to the special need children in operating the system independently.

VII. OBJECTIVES

- i. To find out the difference between pre and posttests mean scores of control group of Children with mild Intellectual Disability in learning Math concept.

- ii. To find out the difference between pre and posttests mean scores of experimental group of Children with mild Intellectual Disability in learning Math concept.
- iii. To compare the pretest mean scores of control and experimental group of Children with mild Intellectual Disability in learning Math concept.
- iv. To compare the gain mean scores of control and experimental group of Children with mild Intellectual Disability in learning Math concept
- v. To find out the effect of Artificial Intelligence (AI) based Adapted Curriculum in learning Math concept among Children with mild Intellectual Disability.

VIII. HYPOTHESES

- i. There will be no significant difference between the pre and posttests mean scores of control group of Children with mild Intellectual Disability in learning Math concept.
- ii. There will be no significant difference between the pre and posttests mean scores of experimental group of Children with mild Intellectual Disability in learning Math concept.
- iii. There will be no significant difference between the pretests mean scores of control and experimental group of Children with mild Intellectual Disability in learning Math concept.
- iv. There will be no significant difference between the gain mean scores of Children with mild Intellectual Disability in experimental and control group in learning Math concept.
- v. There will be no significant difference in the effect of Artificial Intelligence (AI) based Adapted Curriculum in learning Math concept among Children with mild Intellectual Disability.

IX. METHODOLOGY

Research Design

The research design selected for the present study was true experimental design under experimental method.

Variables:

The variables that have causative characteristics are called 'independent' variables, whereas the 'end result' is the dependent variable. The present study aimed at finding the effect of Artificial Intelligence (AI) based Adapted Curriculum on learning mathematical concept among children with mild intellectual disability.

- Independent Variable: Artificial Intelligence (AI) based Adapted Curriculum
- Dependent Variable: Mathematical Concept

Sampling Technique:

Purposive sampling under non probability sampling method was adopted for selecting samples.

Inclusion Criteria

- Condition :Children with Mild Intellectual Disability
- School :Inclusive School
- Grade :Secondary
- Gender :Male and Female
- Age Group : 9 to 11 years

Sample Size:

A total of 10 students with mild intellectual disability pursuing secondary education at West Bengal School, Kolkata were taken as sample for Middle the current study. Among the 10 students, 5 represent control group and remaining 5 were in experimental group.

Table 1
Details of Control Group

| S. No | Name of the Child | Condition | Associated Condition (If any) | Age | Gender | Class |
|-------|-------------------|-----------|-------------------------------|-----|--------|-------|
| 1 | SA | Mild (MR) | No | 11 | Female | 5th |
| 2 | HA | Mild (MR) | No | 9 | Male | 3rd |
| 3 | PR | Mild (MR) | No | 11 | Female | 5th |
| 4 | SR | Mild (MR) | Down syndrome | 10 | Male | 4th |
| 5 | CH | Mild (MR) | No | 11 | Male | 5th |

Table 2
Details of Experimental Group

| S. No | Name of the Child | Condition | Associated Condition (If Any) | Age | Gender | Class |
|-------|-------------------|-----------|-------------------------------|-----|--------|-------|
| 1 | AD | Mild (MR) | Speech Problem | 10 | Female | 4th |
| 2 | HA | Mild (MR) | No | 11 | Male | 4th |
| 3 | SA | Mild (MR) | No | 11 | Male | 5th |
| 4 | AS | Mild (MR) | No | 11 | Male | 5th |
| 5 | PR | Mild (MR) | No | 11 | Female | 4th |

Development Of Tool:

The researcher has chosen two chapters namely ‘patterns in shapes’ and ‘numbers’ from II class math text book developed by West Bengal Text Book Corporation. The researcher adapted the above stated two chapters by using clicker software version. The researcher developed and administered the Adapted Math Curriculum (AMC) checklist on the selected sample. The final checklist was prepared with 75 items under 21 domains after validation.

Date Collection Procedure:

After obtaining prior permission, researcher explained the need and importance of computer based adapted curriculum for Differently abled children with Intellectual Disability to the headmaster.

Orientation was given to the teachers who are handling the Differently abled children with Intellectual Disability about the adapted math curriculum checklist. Samples were taken to the allotted classroom and investigator established a good rapport with them. Investigator started the 1st session with motivation, gradually the concepts(patterns in shapes and numbers) were taught to the selected samples. Periodical evaluation was done to check the progress of the students in the curriculum. All the 21 domains were taught in 35 sessions. After that, posttest was administered and the scores were recorded.

X. RESULTS AND DISCUSSION

i. Hypothesis (H_0)

There will be no significant difference between the pre and post-tests mean scores of control group of Children with mild Intellectual Disability in learning Math.

Table 3
 Pre and Posttests Mean Scores of Control Group of Children with mild Intellectual Disability in Learning Math Concept

| Control group | Test | N | Mean | SD | Z | Sig |
|---------------|-----------|---|------|----------|-------|------|
| | Pre test | 5 | 26.4 | 8.87694 | -.271 | .786 |
| | Post test | | 27.6 | 12.66096 | | |

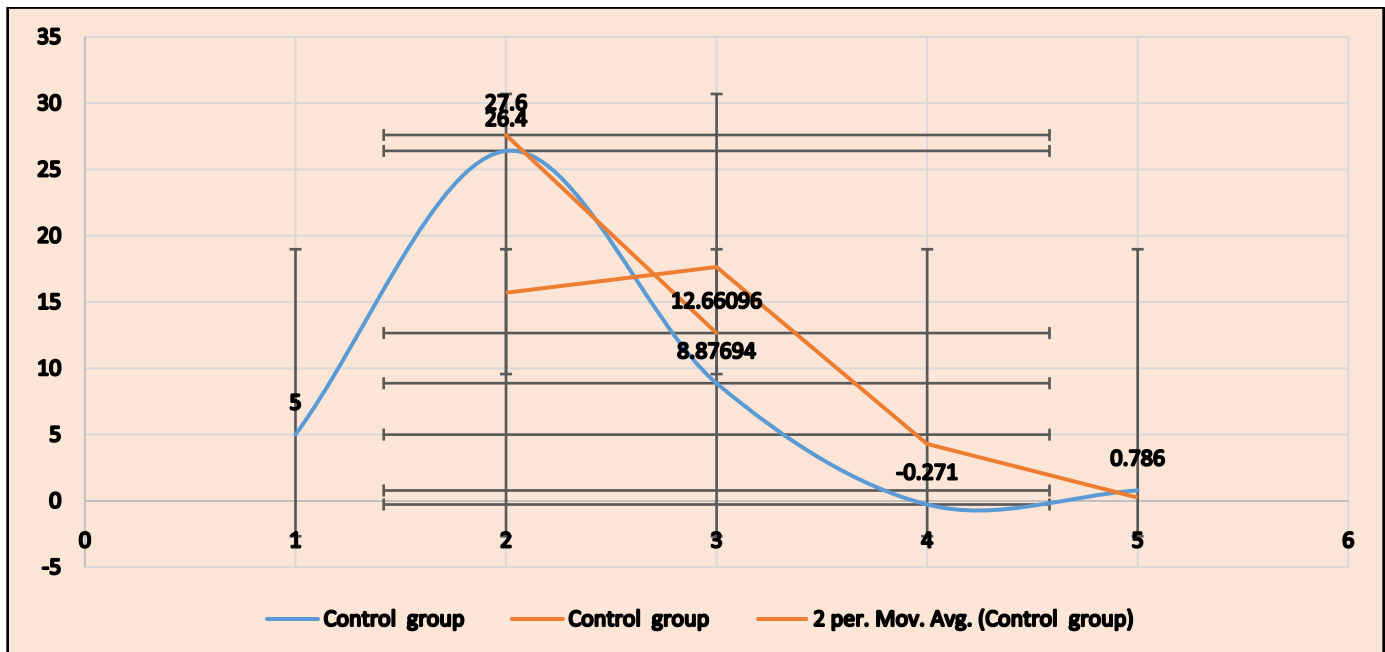


Figure 1: Pretest and posttests mean score of control group of Children with mild Intellectual Disability in learning Math concept

Table 3 and Figure 1 show the pre and posttests mean scores of control group of Children with mild Intellectual Disability in learning Math concept. The pretest mean score of control group of Children with mild Intellectual Disability in learning Math concept is 26.4 whereas the posttests mean score is 27.6. The calculated Z value 0.271 shows that there is no significant difference in the pre and posttests mean scores in learning Math concept. Therefore the above stated hypothesis is accepted.

ii. *Hypothesis (H_0)*

There will be no significant difference between the pre and post-test mean scores of experimental group of Children with mild Intellectual Disability in learning Math concept.

Table 4
 Pretest and Posttests Mean Score of Experimental Group of Children with mild Intellectual Disability in Learning Math Concept

| Experimental group | Test | N | Mean | SD | Z | Sig |
|--------------------|-----------|---|------|----------|-------|------|
| | Pre test | 5 | 28.6 | 16.00937 | 2.032 | .042 |
| | Post test | | 66 | 12.14496 | | |

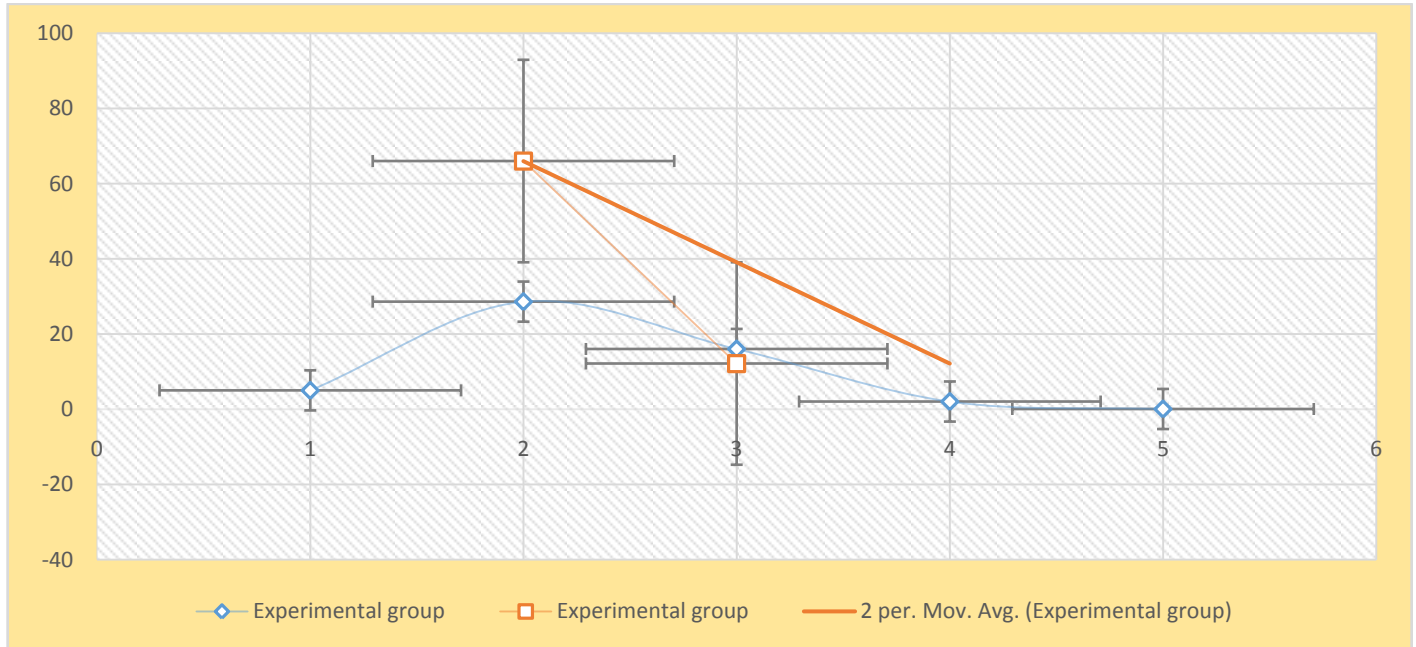


Figure 2: Pretest and posttests mean scores of experimental group of Children with mild Intellectual Disability in learning Math concept

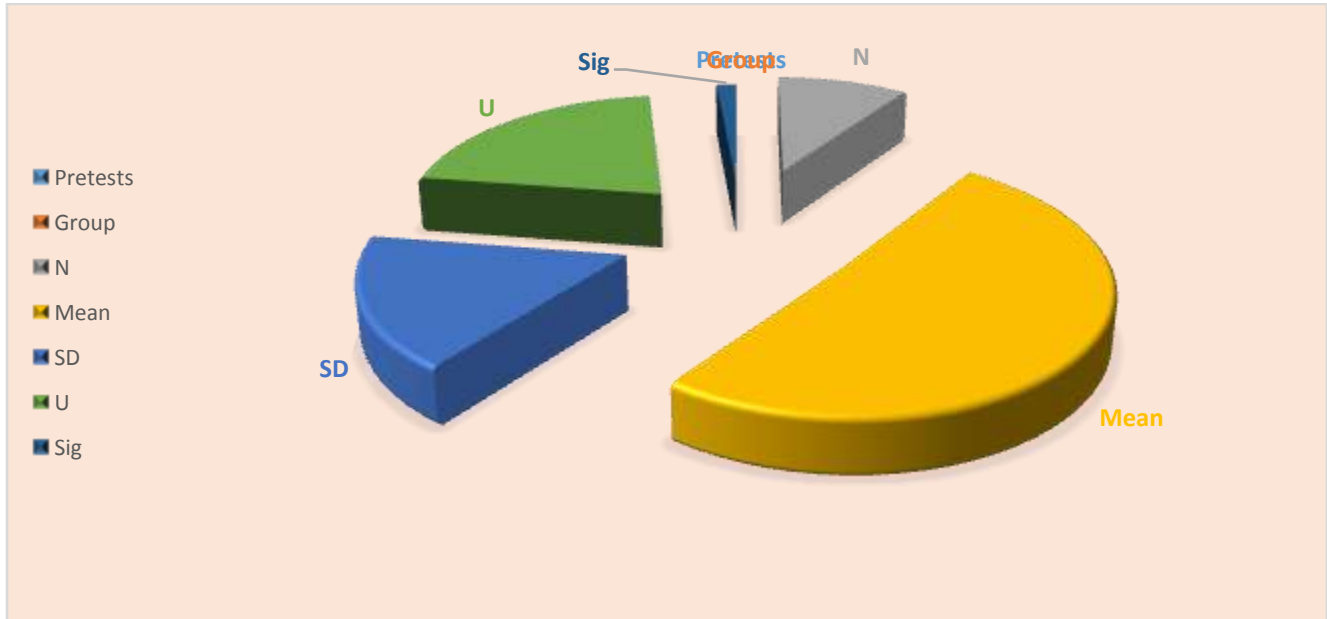
Table 4 and Figure 2 depict pre and posttests mean scores of experimental group of Children with mild Intellectual Disability in learning Math concept. The pretest mean score of experimental group of Children with mild Intellectual Disability in learning Math concept is 28.6 whereas the posttests mean score is 66. The calculated Z value 2.032 shows that there is significant difference in the pre and posttests mean scores in learning math concept. Therefore the above stated hypothesis is rejected.

iii. Hypothesis (H_0)

There will be no significant difference between the pretest mean scores of control and experimental group of Children with mild Intellectual Disability in learning Math concept.

Table 5
Pretests Mean Scores of Control and Experimental Group of Children with mild Intellectual Disability in Learning Math Concept.

| | Group | N | Mean | SD | U | Sig |
|----------|---------|---|------|---------|--------|------|
| Pretests | Control | 5 | 26.4 | 8.87694 | 11.000 | .754 |
| | | | | | | |



Figures 3: Pretests mean scores of control and experimental group of Children with mild Intellectual Disability in learning Math concept

Table 5 and Figure 3 depict the pretests mean scores of control and experimental group of Children with mild Intellectual Disability in learning math concept. The pretest mean score of control group of Children with mild Intellectual Disability in learning math concept is 26.4 whereas the pretest mean score of experimental group is 28.4. The calculated U value, 11.000, shows that there is no significant difference in the control and experimental group

of Children with mild Intellectual Disability in learning math concept. Therefore the above stated hypothesis is accepted.

iv. Hypothesis (H_0)

There will be no significant difference in the gain mean scores of experimental and control group of Children with mild Intellectual Disability in learning Math concept.

Table 6
Gain Mean Scores of Children with mild Intellectual Disability in Control and Experimental Group

| Gain Scores | Group | N | Mean | SD | t | Sig |
|-------------|--------------|---|------|---------|-------|-------|
| | Control | 5 | 1.2 | 2.29347 | 6.704 | 0.001 |
| | Experimental | 5 | 37.4 | 4.82286 | | |

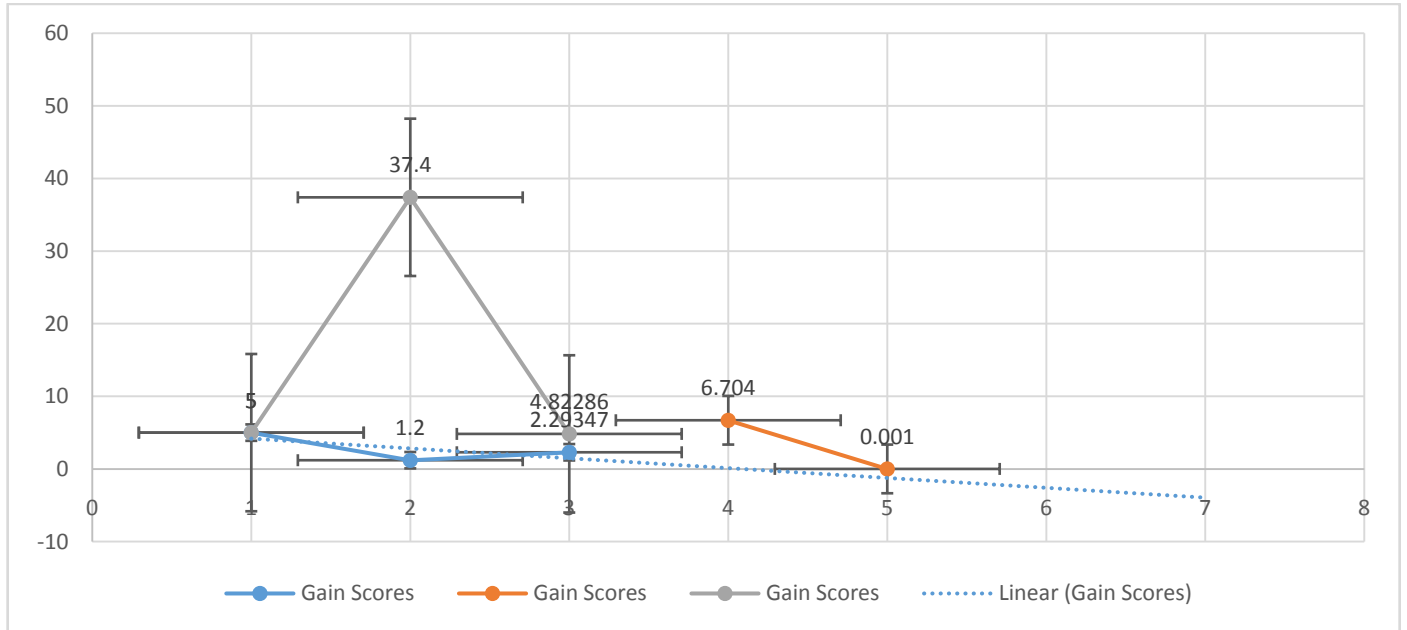


Figure 4: Gain Mean Scores of Children with mild Intellectual Disability in control and experimental group

Table 6 and Figure 4 depicts the gain mean scores of Children with mild Intellectual Disability in control and experimental group in learning math concept. The gain mean scores of control group of Children with mild Intellectual Disability in learning math concept is 1.2 whereas the gain mean scores of experimental group is 37.4.

The t value, 6.704, calculated shows that there is significant difference in the control and experimental group. Therefore, the above stated hypothesis is rejected.

v. *Hypothesis (H0)*

There will be no significant difference in the effect of Artificial Intelligence (AI) based Adapted Curriculum in learning Math concept among Children with mild Intellectual Disability.

Table 7
Post-tests Scores of Control and Experimental Group of Children with mild Intellectual Disability in Learning Math Concept

| Posttest | Group | N | Mean | SD | U | Sig |
|----------|--------------|---|------|----------|-------|-------|
| | Control | 5 | 27.6 | 12.66096 | 1.000 | 0.016 |
| | Experimental | 5 | 66 | 12.89574 | | |

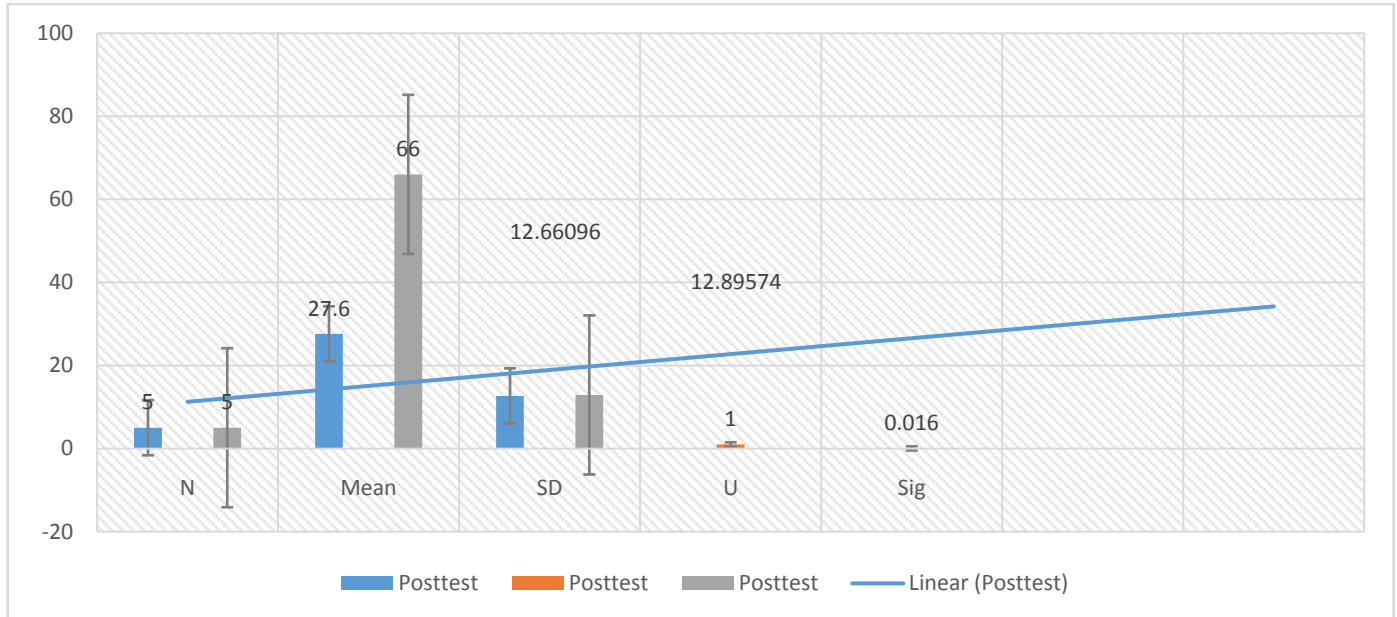


Figure 5: Posttests Scores of Control and Experimental Group of Children with mild Intellectual Disability in Learning Math Concept

Table 7 and Figure 5 depicts the posttests mean scores of Children with mild Intellectual Disability of control and experimental group in learning math concept. The posttest mean score of control group of Children with mild Intellectual Disability in learning math concept is 27.6 experimental group of Children with mild Intellectual Disability is 66. The U value, 1.000, shows that there is significant difference in the control and experimental group. Therefore, the above stated hypothesis is rejected.

XI. CONCLUSION

This study sought to find out that learning Mathematical concept among Children with mild Intellectual Disability get improved while using Artificial Intelligence (AI) based Adapted Curriculum. After analyzing the data, it was discovered that there was a significant effect of Artificial Intelligence (AI) based Adapted Curriculum on learning mathematical concept among Children with mild Intellectual Disability. It shows that Artificial Intelligence (AI) based Adapted Curriculum facilitating learning Math concept. It also appeals to children through auditory and visual senses. The importance of there search study will include classroom teachers to employ instructional methods to using for teaching Math and improving arithmetic skills. It will assist them to prepare & to meet the diverse needs of all students learning the concept of Math such as Pattern in shapes and Numbers.

Computer based adapted curriculum method helps the Differently abled children with Intellectual Disability to understand more easily, to see more clearly, to handle conveniently and to have better learning in Mathematics.

REFERENCES

- [1] Afzal, M., Gondal, B., & Fatima, N. (2014). The effect of computer based instructional technique for the learning of elementary level mathematics among high, average and low achievers. *International Journal of Education and Development using ICT*, 10(4).
- [2] Buntinx, W. H., & Schalock, R. L. (2010). Models of disability, quality of life, and individualized supports: Implications for professional practice in intellectual disability. *Journal of Policy and Practice in Intellectual Disabilities*, 7(4), 283-294.
- [3] Benavides-Varela, S., Callegher, C.Z., Fagiolini, B., Leo, I., Altoe, G., & Lucangeli, D. (2020). Effectiveness of digital-based interventions for children with mathematical learning difficulties: A meta-analysis. *Computers and Education*. doi:https://doi.org/10.1016/j.compedu.2020.103953
- [4] Chambers, B., Slavin, R. E., Madden, N. A., Abrami, P., Logan, M. K., & Gifford, R. (2011). Small-group, computer-assisted tutoring to improve reading outcomes for struggling first and second graders. The research study will include classroom teachers to employ instructional methods to using for teaching Math and improving arithmetic skills. It will assist them to prepare & to meet the diverse needs of all students learning the concept of Math such as Pattern in shapes and Numbers. Artificial Intelligence (AI) based Adapted Curriculum method helps the Children with mild Intellectual Disability to understand more easily, to see more clearly, to handle conveniently and to have better learning in Mathematics. *Elementary School Journal*, 111(4), 625-640.



International Journal of Recent Development in Engineering and Technology
Website: www.ijrdet.com (ISSN 2347-6435(Online) Volume 14, Issue 12, December 2025)

- [5] Ghaywan Arakh. (2012). Effectiveness of computer assisted instruction on academic performance of the children with mild mental retardation at primary level. *Indian Streams Research Journal*, 2, 10-21.
- [6] Hassall, R., & Rose, J. (2005). Parental cognitions and adaptation to the demands of caring for a child with an intellectual disability: A review of the literature and implications for clinical interventions. *Behavioural and Cognitive Psychotherapy*, 33(1), 71-88.
- [7] Ludlow, B. L., & Foshay, J. D. (2005). Handbook of Special Education Technology Research and Practice. *Journal of Special Education Technology*, 20(4), 62.
- [8] Mc Manis, L. D., & Gunnewig, S. B. (2012). Finding the education in educational technology with early learners. *Young children*, 67(3), 14-24.
- [9] Msipha, Z. (2013). A responsive curriculum adaptation for foundation phase learners with a mild intellectual disability in a disadvantaged village in Mpumalanga Province (Doctoral dissertation).
- [10] Singh, Y. P., & Agarwal, A. (2013). Teaching mathematics to children with mental retardation using computer games. *Educational Confab*, 2(1), 44-58.
- [11] Williams, K. R., Wishart, J. G., Pitcairn, T. K., & Willis, D. S. (2005). Emotion recognition by children with Down syndrome: Investigation of specific impairments and error patterns. *American Journal on Mental Retardation*, 110(5), 378-392.
- [12] Zilaey, S., Adibsereshki, N., & Pourmohamadreza-Tajrishi, M. (2017). Attention Program and Math Performance of Students with Intellectual Disability *Journal of Disability Management and Special Education* (2022). Volume 5, No. 1 (July).
- [13] Zbiek, R. M., Heid, M. K., Blume, G. W., and Dick, T. P. (2007). Research on technology in maths education, A perspective of constructs. F. K. Lester (Ed.), *Second Handbook of Research on Maths Teaching and Learning* (pp.1169-1207). Charlotte, NC: Information Age.